



1871

SUITE 1
NW GILMAN BLVD.
ISSAQUAH, WA



*Secure this rare flex space
today! Ideal for versatile
business needs.*

For Lease
11,496 sf Flex Space

FOR LEASE: 11,496 SF Flex Space

Neighborhood Amenities

- 20 minutes to Seattle, 15 minutes to Bellevue, 5 minutes to trails
- Located at the gateway to Issaquah at I-90 Exit 15
- Excellent access via SR 900, Gilman Blvd. and I-90 with 128,000 vehicles/day
- Electrical vehicle charging stations nearby
- Over 4,000 sf collaborative space, event/conference, banquet room space nearby
- Close to Costco headquarters
- Adjacent to Sound Transit park & ride, ¼ mile walking/biking distance
- Walking distance to restaurants, banks, fitness, Formula Brewing & dog daycare

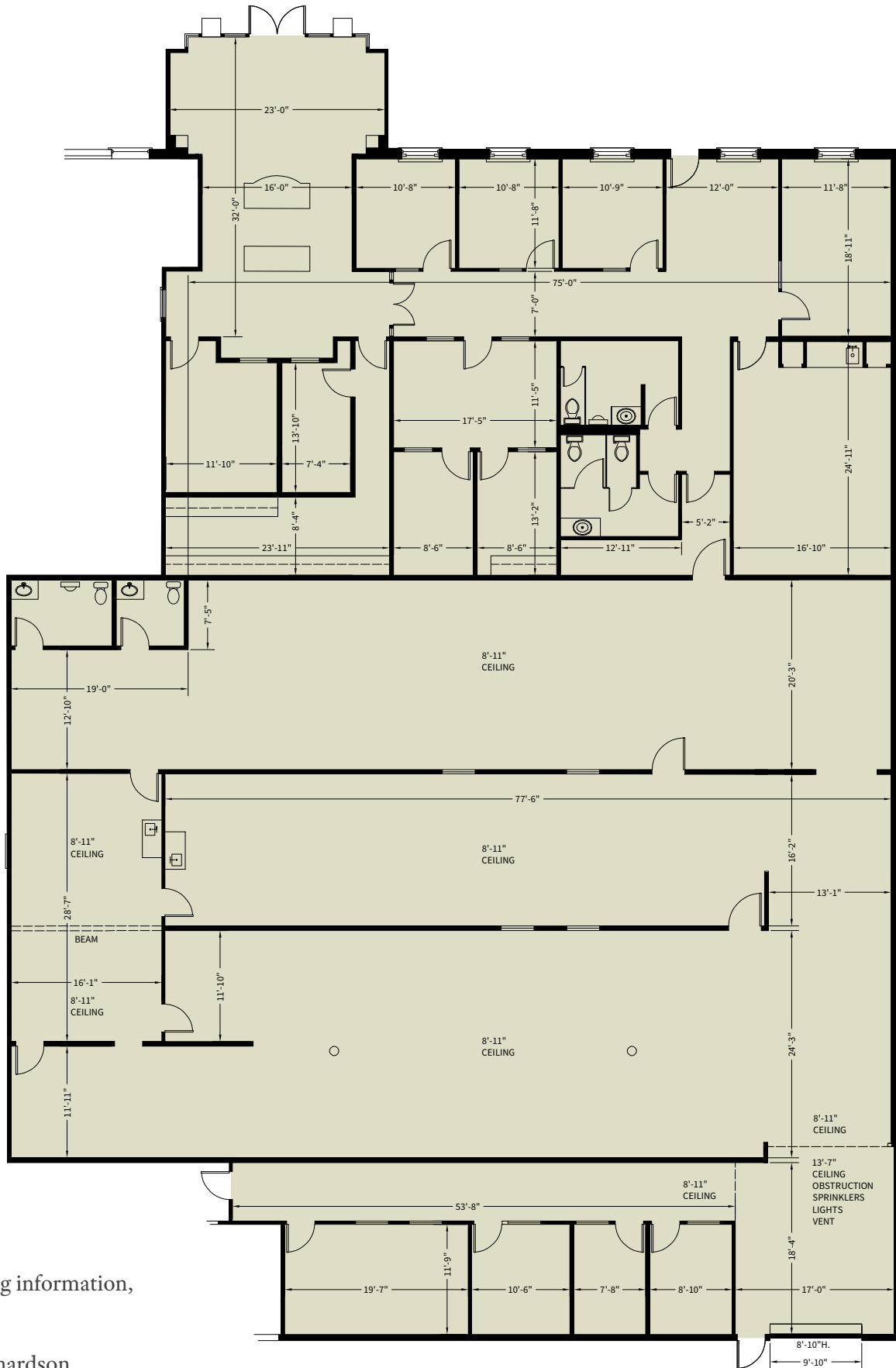
Space Features

- Office space: 3,700 sf
- Warehouse space: 7,000 sf
- 13' high ceiling at loading dock
- Nicely appointed finishes in private offices
- Warehouse space has breakroom with kitchenette
- Large conference room
- Open lobby with double entry doors
- Individually climate-controlled office and warehouse
- Restrooms in office and warehouse spaces

Building Amenities

- Monument signage opportunity
- Loading dock with roll-up bay door
- Storage area adjacent to loading dock
- Sprinkler system
- Three phase power
- Ample free parking





For leasing information,
contact:

Kelly Richardson
Designated Broker

425-395-9577

kellyr@rowleyproperties.com

The information contained herein has been obtained from reliable sources, but is not guaranteed. Photos may not reflect available space.

Hyla Crossing's beautiful setting serves as the inspiration for a special kind of creativity, entrepreneurialism and innovation that is manifested in this neighborhood community. Residents will be drawn by the convenient location, peaceful environment, neighborhood amenities and access to recreational opportunities.



Community known for innovation & start-ups



Close to upscale hotels and dining



Adjacent to Transit Center



20 minutes to Seattle,
15 minutes to Bellevue



1871

SUITE 1

NW GILMAN BLVD.

ISSAQUAH, WA

**For leasing information,
contact:**

Kelly Richardson
Designated Broker

425-395-9577

kellyr@rowleyproperties.com



The Right Space in The Right Place

Rowley Properties is a third-generation, family business that owns, develops and manages approximately 80 contiguous acres in downtown Issaquah.

1595 NW Gilman Blvd., Suite 1
Issaquah, WA 98027
(425) 392-6407

Office hours: Monday-Saturday;
8:00am-5:00pm

rowleyproperties.com